

ISO 9001:2000 Certified



# Keyless Start

## RFID Radio Frequency ID



**Authorize Truck Start**  
The high tech electronic RFID key allows only the driver to start bus.

**Internal Circuit & Wire Harness Protection**  
Smart switches provide auto circuit protection for over-voltage and over-current conditions

**Fleet Master Keys**  
Easy, secure and cost effective when re-keying fleet buses.

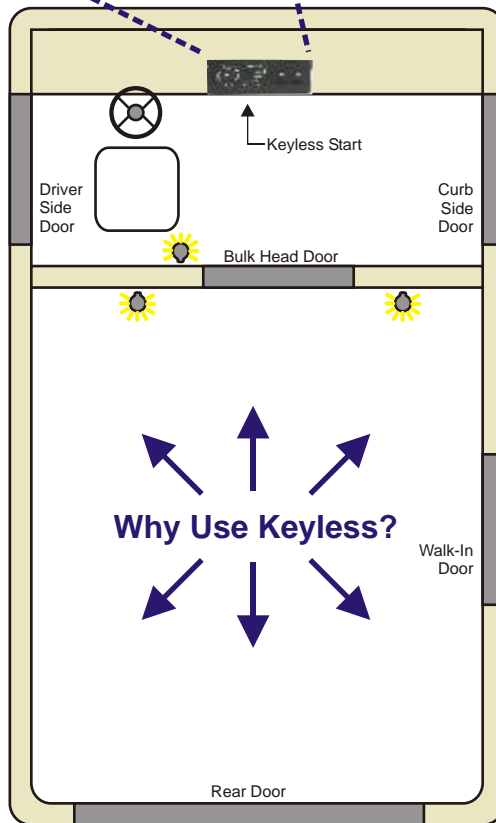
**Electronic Keys**  
Easy to re-code buses with electronic keys



Card Keys



Wristband Keys



**Driver Efficiency**  
The push button start saves time starting the bus and helps to reduce repetitive motion injuries.

**Lower Maintenance Costs**  
Reduces maintenance costs by using solid state push button start. Tested to 500,000 endurance cycles

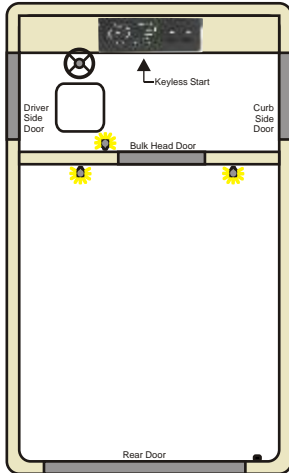
**Auto Dome Light**  
Allows driver to move safely in, out and around bus. Equipped with auto shut off to help improve battery life.

**System Diagnostics**  
The system diagnostics provide quick and easy internal QC tests to check inputs and outputs.

Call **TouchTronics, Inc.**, Sales for  
Additional Information, Samples and Pricing  
**1-800-294-2570** (Inside US)  
**1-574-294-2570** (Outside US)

Designed & Manufactured in the **USA** since 1984

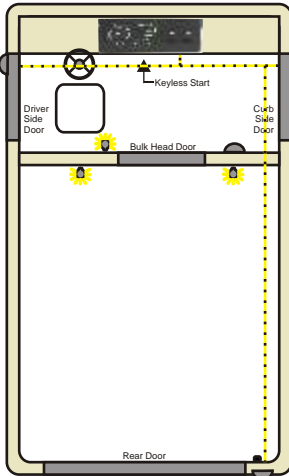
**M130 Keyless Start  
Stand Alone Unit**



This unit is designed to be installed as a single or 'stand-alone' unit.

1. Requires Driver Authorization to start bus.
2. Push-button start and stop bus.
3. Operates dome or courtesy light. Turns off automatically in 45-minutes.
4. Solid state circuit protection for over-voltage and over-current.
5. Electronic Master Fleet keys.
6. Sealed

**M130 Keyless Start -  
RFID Keyless Entry  
M110 Antenna / Reader**



This unit is designed to be installed in combination with 1, 2, 3 or 4 Keyless Entry Antenna/Reader units.

1. Data bus communication between all of the units to:
  - A. Authorize bus entry
  - B. Start Bus
  - C. Monitor door open or close
  - D. Trigger alarm option
  - E. Turn On / Off dome or courtesy light automatically.
2. Requires RFID Authorization to start bus.
3. Push-button starts and stops truck.
4. Operates dome or courtesy light and turns off automatically in 45-minutes.
5. Solid state circuit protection for over-voltage and over-current.
6. Electronic Master Fleet keys.
7. Sealed



Driver Wristband Key  
M120-01



Fleet Master Card Key  
M121-01



Fleet Transfer Card Key  
M121-04

<b>Specifications</b>	-	<b>Keyless Start / M130 Series</b>
Size	-	8.0" x 2 1/4" x 2 1/4"
Frequency	-	134KHz
4 Outputs / 5Amp	-	Run
	-	Start
	-	Accessory
	-	Siren
1 Output / 10Amp	-	Dome Light
Inputs	-	4 Input
Switch Endurance	-	500,000 Cycles
Output Endurance	-	500,000 Cycles

Designed & Manufactured By:

**TouchTronics, Inc.**

57315 Nagy Drive  
Elkhart, IN 46517

Ph: 1-800-294-2570  
Fx: 1-574-293-1611

touchtronics@touchtronics.com  
www.touchtronics.com